

Idin Samimi Mofakham

Shivan

for
flute

2020

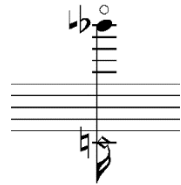
EXPLANATION OF SIGNS



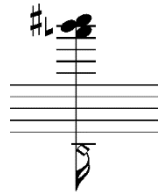
- Aeolian/Air Sounds



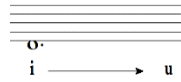
- Pizzicato/Slap



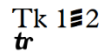
- harmonics (with exact deviation based on the harmonic series / Do not correct pitch)



- harmonic cluster



- sing the vowels into the instrument



- Trill between the trill keys

EXPLANATION OF MICROTONAL ACCIDENTALS

The Extended Helmholtz-Ellis JI Pitch Notation is designed by Marc Sabat and Wolfgang von Schweinitz and used as a core notation in this composition.



5-LIMIT (PTOLEMAIC) - FIFTH HARMONIC *an alteration by ≈ -14 cents;*



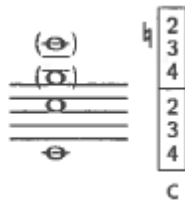
7-LIMIT (SEPTIMAL) - SEVENTH HARMONIC *an alteration by ≈ -30 cents;*



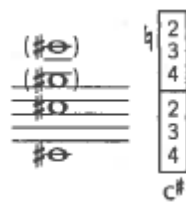
11-LIMIT (UNDECIMAL) *an alteration by ≈ ± 50 cents;*

MULPHONIC FINGERINGS

The Techniques of Flute Playing - Levine, Carin / Mitropoulos-Bott, Christina



C



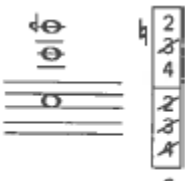
C#



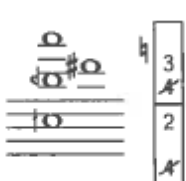
C



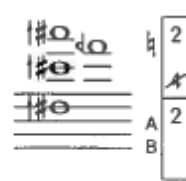
C



C



G#



G#

D#

DURATION 5 MINUTES

for Mehrdad Gholami

Shivan

for flute

Idin Samimi Mofakham

♩ = 72
poco accel.

bisbigliando

♩ = 86

♩ = 72
poco accel.

♩ = 86 ♩ = 52

8 9 10 11

sfffz *sfffz* *pp* *f* *ff*

♩ = 72

12 13

fff

14 15

fff

16 17

fff

18 19 20 21

fff

22 23 24 25

fff

17

Musical notation for measure 17, featuring a treble clef and a 7/8 time signature. The melody consists of eighth and quarter notes with various accidentals (flats and sharps). The bass line is a simple accompaniment with some triplets. A 3-measure triplet is indicated at the end of the measure.

18

Musical notation for measure 18, featuring a treble clef and a 2/4 time signature. The melody is a series of eighth notes with a slur over them. The bass line has two groups of five notes, labeled '5' and '6', indicating fingerings or patterns.

19

Musical notation for measure 19, featuring a treble clef and a 3/4 time signature. The melody includes quarter and eighth notes with accidentals. The bass line has a 5-measure group and a 3-measure triplet.

20

Musical notation for measure 20, featuring a treble clef and a 2/4 time signature. The melody consists of quarter notes with accidentals. The bass line is a simple accompaniment.

21

Musical notation for measure 21, featuring a treble clef and a 3/4 time signature. The melody includes quarter and eighth notes with accidentals. The bass line has a 3-measure triplet and a dynamic marking of *fff*.

23

♩ = 52

Musical notation for measure 23, featuring a treble clef and a 3/4 time signature. The melody is a long note with a slur, changing dynamics from *p* to *ff* to *mf*. The bass line is a simple accompaniment. A voice line is shown below with the syllables 'i' and 'u'.

28

ff *sffz* *pp*

Voice *i* *u*

33

mp *f* *ff* *mp*

Voice *pp humming*

38

pp subito

humming

i *u*

$\text{♩} = 72$

42

ff 5 6

43

3 5

44

3 5 3

45

Musical notation for measures 45 and 46. Measure 45 is in 3/4 time and contains a 7-measure bass line. Measure 46 is in 2/4 time and contains a 5-measure bass line. The treble clef staff features various notes, including flats and naturals, with some notes beamed together.

47

Musical notation for measures 47 and 48. Measure 47 is in 4/4 time and contains a 4-measure bass line. Measure 48 is in 4/4 time and contains a 4-measure bass line. The treble clef staff features various notes, including flats and naturals.

48

Musical notation for measures 49 and 50. Measure 49 is in 3/8 time and contains a 3-measure bass line. Measure 50 is in 5/8 time and contains a 5-measure bass line. The treble clef staff features various notes, including sharps and flats.

50

Musical notation for measures 51 and 52. Measure 51 is in 2/4 time and contains a 6-measure bass line. Measure 52 is in 2/4 time and contains a 5-measure bass line. The treble clef staff features various notes, including flats and naturals.

51

Musical notation for measures 53 and 54. Measure 53 is in 3/4 time and contains a 3-measure bass line. Measure 54 is in 2/4 time and contains a 3-measure bass line. The treble clef staff features various notes, including flats and naturals.

53

Musical notation for measures 55 and 56. Measure 55 is in 3/4 time and contains a 3-measure bass line. Measure 56 is in 4/4 time and contains a 3-measure bass line. The treble clef staff features various notes, including flats and naturals.

54

5

6

55

6

fff

Voice ff

ah!
VERY LOUD SCREAM

57

$\text{♩} = 52$

pp *f* *mp* *mf* *f* *fff*

63

$\text{♩} = 72$

sffz *f* *sempre e con fuoco* *sffz* *sffz*

Tk 1=2 tr

Tk 1=2 tr

66

sffz *sffz* *sffz*

Tk 1=2 tr

Tk 1=2 tr

68

5

6

7

85

fffz *fffz* *fffz* *fffz* *fffz* *fffz* *fffz* *fffz*

Measures 85-87: Treble clef, 5/8 time signature. Measures 85-87 feature sixteenth-note chords with accents. Measure 86 includes a triplet of eighth notes. Measure 87 includes a quintuplet of eighth notes.

86

fffz *fffz* *fffz*

Measures 88-89: Treble clef, 6/8 time signature. Measures 88-89 feature sixteenth-note chords with accents. Measure 89 includes a triplet of eighth notes.

88

fffz

Measures 90-91: Treble clef, 5/8 time signature. Measures 90-91 feature sixteenth-note chords with accents. Measure 91 includes a triplet of eighth notes.

89

fffz

Measures 92-93: Treble clef, 3/4 time signature. Measures 92-93 feature sixteenth-note chords with accents.

90

fffz *fffz* *fffz*

Measures 94-95: Treble clef, 9/8 time signature. Measures 94-95 feature sixteenth-note chords with accents. Measure 95 includes a triplet of eighth notes.

91

fff *possibile*

break rapidly

Measure 96: Treble clef, 4/4 time signature. Measure 96 features a single sixteenth-note chord with an accent.